

## Rules and Regulations

The Preserve is open every day of the year from sunrise to sunset. Because the area is a nature preserve, all natural features, including flora and fauna are protected.

Activities such as hunting, fishing, flower picking and firewood cutting are prohibited. Motorized vehicles are also prohibited, with the exception of wheelchairs or other conveyances for disabled persons.

For complete information regarding the park and its use, contact the Calhoun County Road Commission office at 269-781-9841 or toll free at 1-800-781-5512. You can also visit our website at: [www.calhouncrc.net](http://www.calhouncrc.net).

*Explore the majestic splendor of the  
Ott Biological Preserve,  
Calhoun County's "hidden jewel".*



### CALHOUN COUNTY OTT BIOLOGICAL PRESERVE

Board of Calhoun County Road Commissioners  
Board of Public Works  
Parks Trustees Board

*Commissioners  
Chester E. Travis, Chairman  
Charles E. Monaweck  
Scott A. Brown*



This green space includes approximately 300 acres of natural habitats that have been shaped extensively by glaciers. Within the boundaries of the preserve are two spring fed kettle lakes, Brigham Lake and Hall Lake, as well as the east edge of Dexter Lake, wet peaty lowlands and dry, sandy uplands. The uplands include two



prominent eskers (glacial ridges), one traveling nearly the length of the property from southwest to northeast.

# Habitats

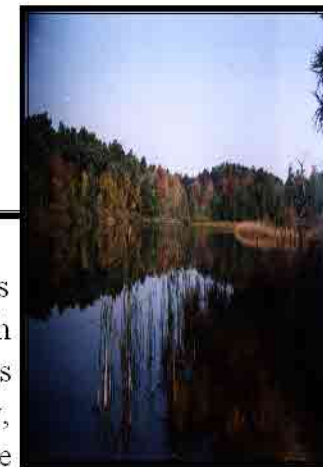
Elevations in the Preserve range from 852 to 920 feet above sea level, with the lowest point being Hall Lake and the highest point near the northeast edge of the property. Well-developed hardwood forests of the uplands include black, red and white oaks, and pignut and shagbark hickories. Flowering dogwood is a common tree species of the lowland hardwood forests including yellow birch, red maple and black ash, with spicebush in the under story.

Some of the forested areas are less developed and represent fields and orchards abandoned as recently as 30 years ago. Common trees in these areas include young black and red oaks, box elders and apples.



# Trail Map

## Access and Trails



The lake edges are ringed with trees such as the pussywillow, tamarack and the

notorious poison sumac. From the tree line to the water's edge exists an interesting habitat called prairie fen, which is underlain by marley, alkaline soils, and dominated by sedges. These fens support carnivorous plants including the purple pitcher plant, sundew and bladderworts, as well as several spectacular orchids.

Marshes on the preserve are dominated by sedges, grasses, cattails and shrubby species such as red-osier dogwood and willows. In addition, several species of frogs, toads and turtles exist in the forest, fens and marshes. Numerous birds and waterfowl call the preserve home, as well as sand hill cranes, gray squirrels, raccoons and white-tailed deer.

A boardwalk has been constructed to allow visitors to view the wetlands up close. Visitors may continue west on the Sutarek Trail Loop that leads to the J.H. Kellogg Trail, which runs south approximately 700 feet uphill and re-connects with the Sutarek Trail Loop. This trail winds down the hillside on the east side of Hall Lake, continues east up a sandy hill and then back south, down the entrance trail that leads to the parking area.

Hikers can also access trails on the northwest side of the Preserve, although not all the trails are fully developed.

**—CAUTION—**

***NEVER HIKE ALONE!***

Major trails are indicated on the map. Currently the primary access to the Preserve is a parking area on the south side of the property at the end of Arlington Street. Once parked, visitors may hike north along a trail through a young forest to a well-developed upland hardwood forest. This is where the Sutarek Loop begins and continues north into the forest to a cleared area.

The east esker trail takes you further north approximately 1,000 feet along an esker that rises as much as 20 feet above the hardwood forests on either side. The esker drops off to lowland hardwoods and black muck.

