

HISTORY

In 1997, the Board of Calhoun County Road Commissioners and the Parks Trustees Board developed the concept of restoring historic road bridges and relocating them to the park. The intent was that the bridges would be used as a "hands on" exhibit of Michigan's transportation history and the technology used in fabricating components of wrought iron and steel.

Historic Bridge Park is home to bridges that feature a variety of truss designs and manufacturing techniques dating back to the late 1800's and early 1900's.



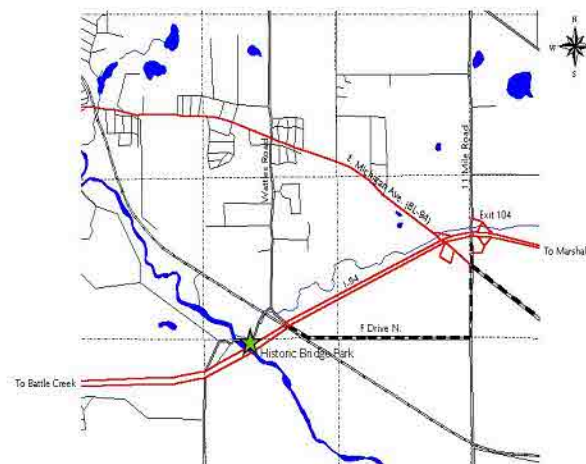
Sculpture of Bridge Shop

Parks Rules & Regulations

Historic Bridge Park is open every day of the year from sunrise to sunset. Activities such as hunting, flower picking and firewood cutting are prohibited, as well as motorized vehicles on the trailways, with the exception of wheelchairs or other conveyances for disabled persons.

As with all county parks, alcoholic beverages are prohibited. Pavilion and restroom facilities are available to rent for weddings, graduation parties, class reunions, etc.

For complete information regarding the park and special use permits, or to reserve the pavilion, contact the Calhoun County Road Commission office at (269) 781-9841, toll free at (800) 781-5512 or visit us on the web at www.calhouncrc.net



LOCATION MAP

HISTORIC BRIDGE PARK



Board of Calhoun County Road Commissioners
Board of Public Works
Parks Trustees Board

Commissioners

*Chester E. Travis, Chairman
Charles E. Monaweck
Scott A. Brown*



THE PARK

Formerly known as "County Park", Historic Bridge Park is located on Wattle Road and along the Kalamazoo River in Emmett Township, southeast of Battle Creek, Michigan.



Restored Gale Road Bridge

The park is a passive recreation area with a network of non-motorized trailways and restored historic bridges. It serves as the trailhead for the County Linear Trailway, as well as a segment of the National Park System's North Country National Scenic Trail.



Dixon's Bridge and County Linear Trailway

Bridges

To date, Historic Bridge Park is home to the following bridges:

- **Bauer Road Bridge**, from Clinton County, Michigan built in 1880
- **Charlotte Highway Bridge**, from Ionia County, Michigan built in 1886
- **133rd Avenue Bridge**, from Allegan County, Michigan built in 1897
- **Gale Road Bridge**, from Ingham County, Michigan built in 1897
- **20 Mile Road Bridge**, from Clarendon Township in Calhoun County, Michigan built in 1906



Accommodations

Historic Bridge Park is open every day from sunrise to sunset. Park facilities include:



Picnic Area

picnic area and shelter, boat launch, trails, parking area and handicap accessible restrooms.

Events

Annually, the last Saturday in June is our "**Living History Demonstration**". This is a fun and educational event for people of all ages to enjoy.

Demonstrators provide an exhibition of



Living History Demonstration

manufacturing and industrial building techniques such as riveting, forge welding and blacksmithing.

Holiday Lights

Each year during the holidays, Historic Bridge Park celebrates by lighting the bridges. Experience the scenic nature of Historic Bridge Park, its bridges and the Kalamazoo River.



Bridge Park Holiday Lights